



# Colours with a system



## Mipa Colour Matching

SUCCESSFUL CAR REFINISHING

**mipa**<sup>®</sup>

# The perfect colour



The choice of a **correct colour shade for car refinishing** is the key for a visually perfect result. Searching this colour shade is time consuming and difficult because of numerous information to be considered and because of the ever increasing choice of possible shades.

Mipa offers **professional and innovative tools** to the user, in order to shorten this search and to lead to a suitable result.

## • Mipa Color-System II

••••• All colour samples are connected with the **Mipa Color System** colour code, which follows this system:

**M I P A C O L O R S Y S T E M**



M I P A C O L O R S Y S T E M C O U L O U R C O D E

0 - 3 - 01690 - 500

Solid colour System

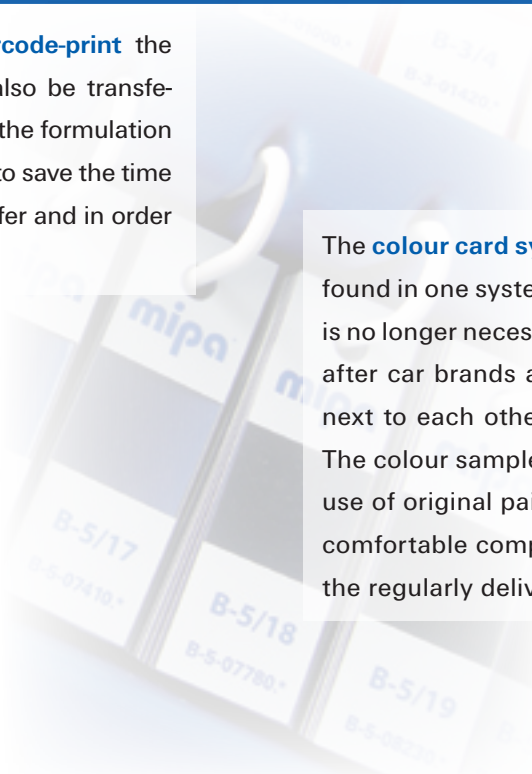
Colour group similar to RAL

Colour number

# The perfect colour

Because of a **barcode-print** the colour code can also be transferred via scanner to the formulation software, in order to save the time for a manual transfer and in order to avoid errors.

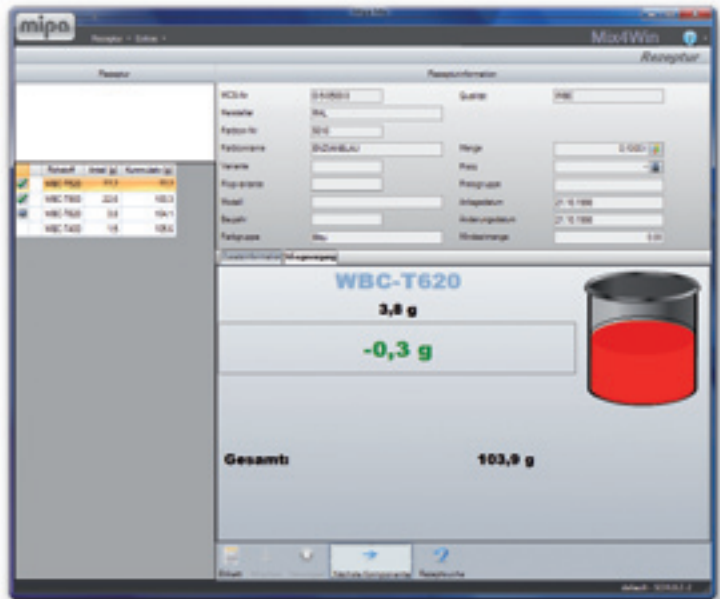
The **colour card system** offers thousands of colour samples. All variants can be found in one system, changing between different variant and annual swatches is no longer necessary. Because of the chromatic sorting contrary to the sorting after car brands all variants and similar colour shades can be found directly next to each other. Therefore the user can react easily to colour deviations. The colour samples have been produced **with highest precision** and with the use of original paint. An innovative closing and storing mechanism enables a comfortable comparison with the vehicle as well as easy and fast addition of the regularly delivered new variants.



## ..... Mipamix 5.0

• The software represents by **far more than just a formulation program**. It contains in compact form the long standing Mipa experience in reproducing colour shades and therefore can be called a „colour library“. Numerous features ease the use and offer at the same time **the sometimes crucial advantage** over other systems:

- User management with password control
- Administration of own formulations
- Price management of all components
- Stock control
- Weighing history
- Mixing amount proposal depending on object
- Integrated product advice
- Customized screen designs and print-outs
- Possible combination with Mipa industrial and decorative mixing systems



Next to the regularly updated versions on data discs formulations are also available online at [www.mipa-paints.com](http://www.mipa-paints.com) with a daily update.

# with Mipa Color Matching.

## ..... Mipamix SSP

• The **portable spectrophotometer** compares colour samples with the formulations of the required Mipa mixing system by measuring the colour in several angles. In this process more than **20-times more colours** can be compared than with printed colour cards. The user gets proposals and evaluations of the colours fitting to the sample. Because of the possibility to measure and save colours even offline without computer connection no changes in the work flow or special compartments are necessary.



## Colour matching made easy

- 1** The colour on the car can easily be compared with the colour card because of the assortment of the **card according to colour groups**. Once you have found the correct colour shade, the Mipa Color System colour code (eg. O-3-.....) is given to the formulation computer by keyboard or by EAN-code reader. The correctly mixed formulation then matches exactly the colour shade on the colour card.
- 2** As usual, formulations also can be found according to original codes (eg. VWL 90 E) or colour names (eg. "diamond white"). **One or more formulations** are recommended by the computer, but to be absolutely sure before mixing, the colour card of the formulation should be compared to the car in progress. Then you will be able to react on colour changes, caused perhaps by weathering or similar influences.
- 3** Via a portable spectrophotometer the colour can be measured **directly on the car**. The corresponding Mipa Color System colour code is found computerized and is recommended. The database of **Mipamix SSP** is showing about 20-times more possible colours than a common colour documentation.

# Successful Car Refinishing



**MIPA AG**

Am Oberen Moos 1 • D-84051 Essenbach

Tel: +49 (0) 87 03 / 9 22-0 • Fax: +49 (0) 87 03 / 9 22-100

E-Mail: [mipa@mipa-paints.com](mailto:mipa@mipa-paints.com) • [www.mipa-paints.com](http://www.mipa-paints.com)